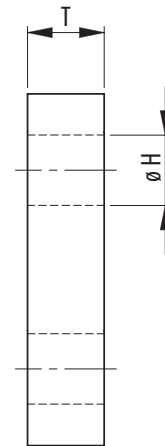
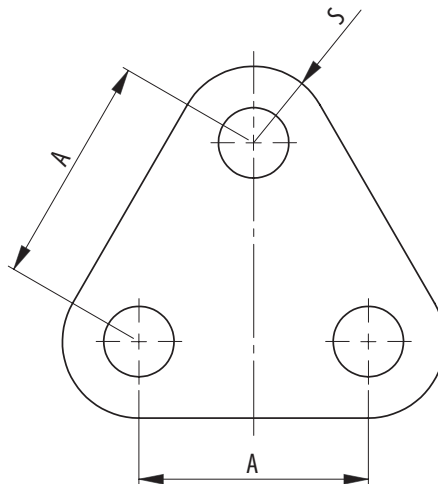
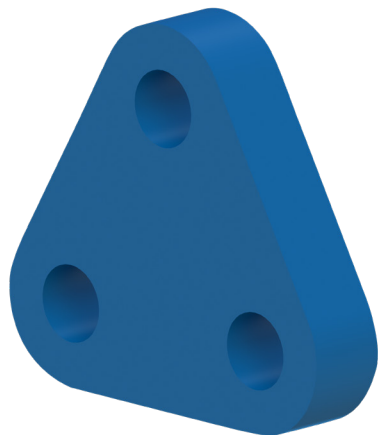


TRIANGLE PLATES; HIGH TENSILE PLATES



Model Nr.	WLL (Mtons)	MBL (Mtons)	Dimensions (mm)				Weight (kg)
			A	ØH	T	S	
TP 40.35.9,5	9,5	47,5	100	35	40	35	5
TP 40.40.12	12	60	110	40	40	40	6,2
TP 45.42.13,5	13,5	67,5	120	42	45	42,5	8,1
TP 45.45.17	17	85	130	45	45	50	11
TP 50.55.25	25	125	140	55	50	65	17
TP 60.60.35	35	175	150	60	60	70	23
TP 80.75.55	55	275	180	75	80	85	44
TP 90.90.85	85	425	220	90	90	110	80
TP 110.105.120	120	600	240	105	110	130	126
TP 130.115.150	150	750	260	115	130	135	164
TP 140.115.175	175	875	290	115	140	145	217
TP 150.140.200	200	1000	380	140	150	160	329
TP 170.150.250	250	1250	450	150	170	175	490
TP 170.160.300	300	1500	400	160	170	230	602
TP 200.180.400	400	2000	480	180	200	260	964
TP 200.200.500	500	2500	500	200	200	310	1234
TP 250.220.600	600	3000	550	220	250	310	1640
TP 250.230.700	700	3500	580	230	250	340	1927
TP 250.235.800	800	4000	590	235	250	380	2251
TP 280.245.900	900	4500	620	245	280	410	2910
TP 300.255.1000	1000	5000	650	255	300	430	3434
TP 320.285.1250	1250	6250	730	285	320	490	4719
TP 320.305.1500	1500	7500	780	305	320	570	6064

Minimum Ultimate Strength = 5 x WLL

- Other sizes possible.
- Painted blue (RAL 5017).
- Material certificate according EN 10204 3.1 included.



SEE OUR WARNING
& SAFETY INFORMATION